

oasis

3-position sleeper



oasis

3-position sleeper

Sleep tight with the Oasis Sleeper, which opens from the side to conserve space in cramped patient rooms. Its central locking caster system – operated by a pedal - allows caregivers and cleaning staff to reposition the Sleeper with ease.

Features

- Limited Lifetime Warranty
- Easily moved by caregivers or cleaning staff
- Central Locking Caster system activated by easy-access pedals
- Large, 28 x 80 sleep surface
- All upholstery is field-replaceable
- 1000lb static load weight rating

Options

- Custom finishes
- Choice of wood, urethane or solid surface arm caps
- Choice of upholstered or laminate front panel
- Contrasting fabrics
- CAL TB 133 Compliance
- Moisture Barrier



Stance Healthcare seating products are Level Certified. To learn more, visit www.levelcertified.org.



features



Specify with upholstered arm, or optional wood or polyurethane arm caps



Boasts ultra-durable steel frame construction and long lasting neoprene wheels



Easy-access foot activators allow ease of mobility and eliminate care-giver strain

3 Positions



2 person sofa



Chaise position



Sleep position

Choice of laminate or upholstered front panel



Fully upholstered
Model No. SL820-UPH



Laminate panel
Model No. SL800

Wood/laminate finish selection:



Hardrock Maple
(HM)



Candlelight
(CL)



Rustic Cherry
(RC)



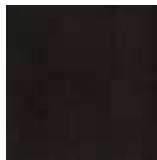
Summer Flame
(SF)



Mahogany
(MA)



Cherry Blossom
(CB)



Chocolate
(CH)



Watch the video!

Visit us at stancehealthcare.com/oasis-sleeper.php

