

# accent

healthcare seating collection



# accent

Accentuate your space with the Accent stacking chair. The versatile Accent is available with or without arms and is well-suited to waiting areas, patient rooms, cafeterias and administrative spaces. Accent is comfortable, efficient and durable enough to withstand intensive use.

## Features

- Limited lifetime warranty
- 14-gauge steel frame powder-coated in a range of finishes
- Exceeds BIFMA Seating Durability test to 500 lb.
- Available in 3 seat widths: 18.5", 22" and 26"
- Chair back contoured for enhanced comfort
- Waterfall seat front design does not inhibit blood circulation
- Stacks 6 high on the floor and 10 high on dolly
- Collection includes coordinating side tables

## Options

- Custom frame finishes
- Custom wood back finishes
- Contrasting fabrics
- Ganging clip
- CAL TB 133 Compliance
- Moisture barrier
- Wall-Saver frame design
- Chair Dolly (stacks 10 chairs high)



Stance Healthcare seating products are Level Certified. To learn more, visit [www.levelcertified.org](http://www.levelcertified.org).



## features



Compound-curved back provides a snug fit



Double-stitch method increases durability and provides a cleaner appearance



Wood back finish provides a natural look



Back available in three unique cut-out designs. Custom cut-outs also available



“Waterfall” front edge design enhances comfort and eliminates a potential pinch point



Chair design allows for easy cleaning and eliminates potential bacteria traps

# Statement of Line



**Armless**  
W 20  
D 21  
H 32.5  
Seat H 18  
Seat W 18.5



**With arms**  
W 23.5  
D 21  
H 32.5  
Seat H 18  
Seat W 18.5  
Arm H 26.5



**Mid-size armless**  
W 23.5  
D 21  
H 32.5  
Seat H 18  
Seat W 22



**Mid-size with arms**  
W 27  
D 21  
H 32.5  
Seat H 18  
Seat W 22  
Arm H 26.5



**Casters**  
W 23.5  
D 21  
H 32.5  
Seat H 18  
Seat W 18.5  
Arm H 26.5



**Bariatric chair**  
W 32  
D 21  
H 32.5  
Seat H 18  
Seat W 26  
Arm H 26.5



**Hip chair**  
W 23.5  
D 21  
H 36  
Seat H 24.5  
Seat W 18.5  
Arm H 30



**Stool**  
W 23.5  
D 21  
H 43.5  
Seat H 28  
Arm H 36



**Accent chair dolly**  
Standard (stacks 10)  
Mid-size (stacks 6)  
Bariatric (stacks 6)



**18 x 18 square table**  
W 18  
D 18  
H 17

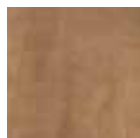


**18 x 34 rectangular table**  
W 18  
D 34  
H 17

## Wood back finish selection:



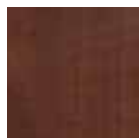
Hardrock  
Maple (HM)



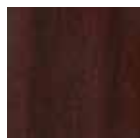
Candlelight  
(CL)



Rustic Cherry  
(RC)



Summer Flame  
(SF)



Mahogany  
(MA)



Cherry  
Blossom (CB)



Grenada  
(GR)



Chocolate  
(CH)

## Metal frame finish selection:

*\*Custom frame finishes available on request*



Smooth  
Black



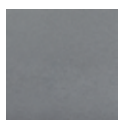
Textured  
Black



Textured  
Nickel



Smooth  
Silver



Gunmetal



Metallic  
Beige

## Standard cut-out options:



Oval



Squares



Flute

*\*Custom cut-out also available*



All Accent Chair Models may be specified with upholstered back or wood back



STANCE | HEALTHCARE

45 Goodrich Drive Kitchener, ON N2C 0B8 tel 1.877.395.2623 fax 1.877.395.6270 stancehealthcare.com  
S10-17 © Stance Healthcare Inc. all rights reserved.

