

# Treatment Tables

## Ordering Guide

When ordering Treatment Table products, please specify the following information:



Specification codes must be added to unit Model No. as shown below.

Upholstery and additional options must be specified separately.

For connected seating requirements, please contact our sales office for pricing and assistance.

Specification code sample:

**ST6085 - DW - SF**

Model No.

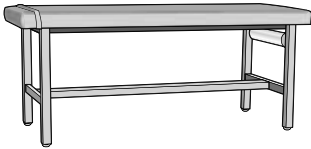
Wood  
finish code

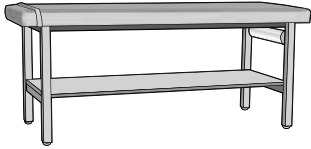
### Specification Codes:

#### Wood finish codes:

- Candlelight (CL)
- Cherry Blossom (CB)
- Chocolate (CH)
- Grenada (GR)
- Hard Rock Maple (HM)
- Mahogany (MA)
- Rustic Cherry (RC)
- Summer Flame (SF)

# Treatment Tables

	Description		Dimensions				
	Treatment table Powdercoated steel frame "Quick-change" paper roll holder <b>Model No. ST6085</b> • Adjustable back rest, add \$389 list		Width 72 Depth 28 Height 30 Ship Weight 90 Com YD 3.5				
	<b>COM</b>		1	2	3	4	5
ST6085	1295	1415	1537	1661	1787	1915	

	Description		Dimensions				
	Treatment table with shelf Powdercoated steel frame with shelf "Quick-change" paper roll holder <b>Model No. ST6085-SH</b> • Adjustable back rest, add \$389 list		Width 72 Depth 28 Height 30 Ship Weight 125 Com YD 3.5				
	<b>COM</b>		1	2	3	4	5
ST6085-SH	1559	1681	1805	1932	2061	2191	

# Treatment Tables



## Description

Treatment table  
 Powdercoated steel frame with drawer unit  
 "Quick-change" paper roll holder

### Model No. ST6085-DW

- Adjustable back rest, add \$389 list

## Dimensions

Width 72  
 Depth 28  
 Height 30  
 Ship Weight 195  
 Com YD 3.5

## COM

1

2

3

4

5

6

ST6085-DW

2378

2508

2641

2775

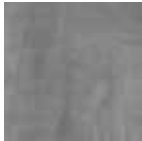
2912

3051

## Laminate finishes:



Hardrock Maple  
(HM)



Candlelight  
(CL)



Cherry Blossom  
(CB)



Summer Flame  
(SF)



Mahogany  
(MA)



Rustic Cherry  
(RC)



Grenada  
(GR)



Chocolate  
(CH)