

kite

wood folding chair



kite wood

Kite is ideal for patient rooms and virtually any area where space is at a premium. This lightweight, highly durable wood frame can be conveniently folded and stored on a wall bracket when not in use.

Features

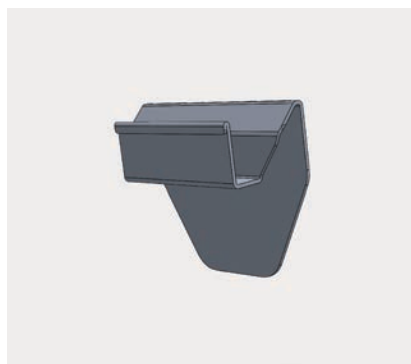
- Limited Lifetime Warranty
- Molded plywood construction provides enhanced durability
- Contoured back and waterfall seat design provide comfortable sit
- Seat and back cushions easily removed/replaced if necessary
- Chair depth when mounted to wall is 7.5"

Options

- Choice of upholstered or wood back
- Custom frame finishes
- Contrasting fabrics
- CAL TB 133 Compliance
- Moisture Barrier
- Protective wall bumper on chair back
- Also available in metal frame



features:



Bracket allows chair to mount tightly against the wall



Contoured seat and back cushions provide ergonomic comfort



Frame design eliminates pinch points and risk of chair folding unintentionally



Waterfall seat design provides comfortable sit

Statement of Line



Kite Wood Folding Chair with wood back
Model No. KT300-WDB
 W 19
 D 22.75
 H 32
 Seat H 18
 Seat W 16.25
 Weight 16



Kite Wood Folding Chair with upholstered back
Model No. KT300-UPB
 W 19
 D 22.75
 H 32
 Seat H 18
 Seat W 16.25
 Weight 16

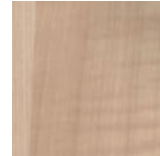


Wall Mount Bracket
Model No. KICWB
 W 7.5
 D 2.5
 H 6

Dimensions:



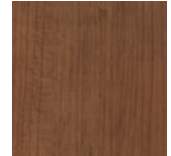
Wood finish selection:



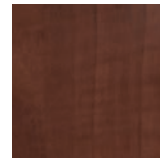
Hardrock Maple (HM)



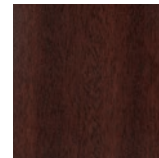
Candlelight (CL)



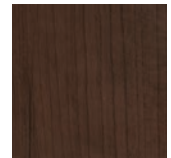
Rustic Cherry (RC)



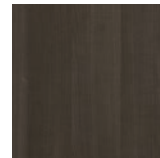
Summer Flame (SF)



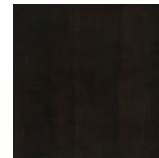
Mahogany (MA)



Cherry Blossom (CB)



Grenada (GR)



Chocolate (CH)

Kite folding chair is also available in metal



STANCE | HEALTHCARE

45 Goodrich Drive Kitchener, ON N2C 0B8 tel 1.877.395.2623 fax 1.877.395.6270 stancehealthcare.com
 S05-17 © Stance Healthcare Inc. all rights reserved.

