

cassia

lounge seating collection



cassia

Cassia's sleek, linear profile gives off a fashionable, contemporary vibe. But Cassia is also about substance, featuring an internal steel framework clad with engineered plywood for extreme durability.

Features

- Limited Lifetime Warranty
- 14-gauge internal steel framework provides enhanced structural integrity
- Concealed clean-out space between seat and back
- Low-profile nylon glides protect floors from damage
- No visible fasteners

Options

- Choice of wood, polyurethane or solid surface arm caps
- Custom sled base and arm cap finishes
- Contrasting fabrics
- CAL TB 133 Compliance
- Moisture Barrier



Stance Healthcare seating products are Level Certified. To learn more, visit www.levelcertified.org.



features



All fasteners are concealed





Contemporary sled base design

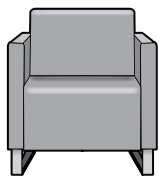


Low-profile nylon glide
protects floors from damage

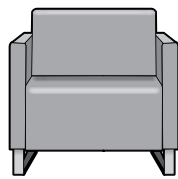


Coordinating side table available in several sizes

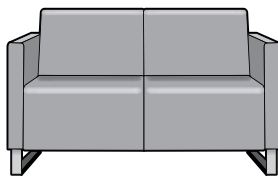
Statement of Line



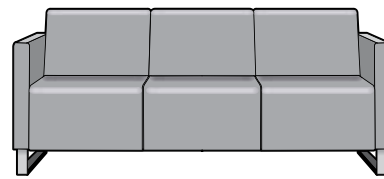
One seat lounge



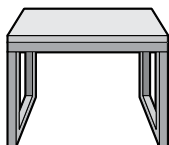
Bariatric lounge
(33" seat width)



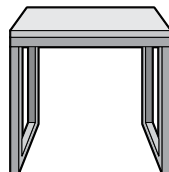
Two-seat lounge



Three-seat lounge



16" high tables



21" high tables

Features:

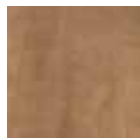
- Engineered plywood construction reinforced by 14-gauge steel bracketing for enhanced structural integrity
- Powder-coated steel sled base with silver finish
- End tables are 16" and 21" high with choice of laminate or solid-surface tops
- Lineup includes Bariatric lounge with a 33" seat width



Wood arm cap finish selections:



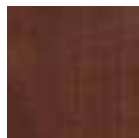
Hardrock
Maple (HM)



Candlelight
(CL)



Rustic Cherry
(RC)



Summer Flame
(SF)



Mahogany
(MA)



Cherry
Blossom (CB)



Grenada
(GR)



Chocolate
(CH)

Metal leg finish selections: **Custom leg finishes available on request*



Smooth Black
(SB)



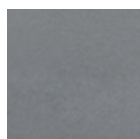
Textured Black
(TB)



Textured Nickel
(TN)



Smooth Silver
(SS)



Gunmetal
(GM)



Metallic Beige
(MB)



STANCE | HEALTHCARE

45 Goodrich Drive Kitchener, ON N2C 0B8 tel 1.877.395.2623 fax 1.877.395.6270 stancehealthcare.com
S02-16 © Stance Healthcare Inc. all rights reserved.

