

# carson

lounge seating for behavioral health



# carson bh

Carson Lounge Seating for Behavioral Health offers a clean, rectilinear profile that conceals a structural steel framework. Besides extreme durability, Carson was designed for Behavioral Health environments and offers several features to enhance the safety of patients and caregivers.

## Features

- Limited Lifetime Warranty
- 14-gauge steel framework provides enhanced structural integrity
- All fasteners are tamper resistant
- Steel pan conceals upholstery staples
- Concealed clean-out space between seat and back
- Low profile nylon glides protect floors from damage

## Options

- Choice of wood, polyurethane, solid surface or rigid polyester arm caps
- Choice of wood or powder coated steel leg
- Contrasting fabrics
- CALTB 133 Compliance
- Moisture Barrier



Stance Healthcare seating products are Level Certified. To learn more, visit [www.levelcertified.org](http://www.levelcertified.org).



## features



All fasteners are tamper-resistant and concealed for added security



Low profile nylon glides protect floor from damage



Choice of wood or powdercoated steel leg



Attention to detail is evident in superb craftsmanship

# Statement of Line

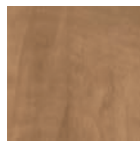


\*Available in choice of wood or metal leg

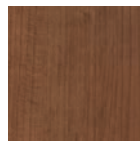
## Wood leg finish selections:



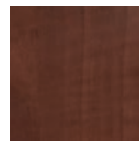
Hardrock  
Maple (HM)



Candlelight  
(CL)



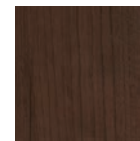
Rustic Cherry  
(RC)



Summer Flame  
(SF)



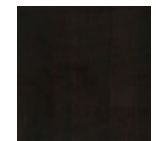
Mahogany  
(MA)



Cherry  
Blossom (CB)



Grenada  
(GR)

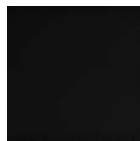


Chocolate  
(CH)

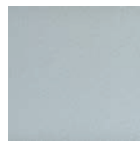
## Metal leg finish selections:



Smooth Black  
(SB)



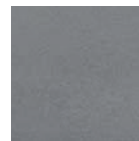
Textured Black  
(TB)



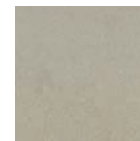
Textured Nickel  
(TN)



Smooth Silver  
(SS)



Gunmetal  
(GM)



Metallic Beige  
(MB)

## Polyurethane arm cap finishes:



Black (PB)



Grey (PG)



Taupe (PT)

## Rigid polyester arm cap finishes:



Black (EB)



Grey (EG)



Taupe (ET)



White (EW)



STANCE | HEALTHCARE

45 Goodrich Drive Kitchener, ON N2C 0B8 tel 1.877.395.2623 fax 1.877.395.6270 stancehealthcare.com

S01-19 © Stance Healthcare Inc. all rights reserved.

