

carson

lounge seating collection



carson

Carson Lounge Seating Collection offers a clean, rectilinear profile that conceals a structural steel framework and ensures a high level of durability.

Features

- Limited Lifetime Warranty
- 14-gauge steel framework provides enhanced structural integrity
- Concealed clean-out space between seat and back
- Nylon glides protect floors from damage
- No visible fasteners

Options

- Choice of wood, rigid polyester, polyurethane or solid surface arm caps
- Choice of wood or powder coated steel leg
- Custom leg and arm cap finishes
- Contrasting fabrics
- CAL TB 133 Compliance
- Moisture Barrier



Stance Healthcare seating products are Level Certified. To learn more, visit www.levelcertified.org.



features



No visible fasteners



Low profile nylon glides protect floor from damage



Choice of wood or powdercoated steel leg



Attention to detail is evident in superb craftsmanship

Statement of Line

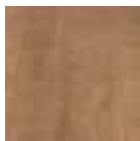


*Available in choice of wood or metal leg

Wood leg finish selections:



Hardrock
Maple (HM)



Candlelight
(CL)



Rustic Cherry
(RC)



Summer Flame
(SF)



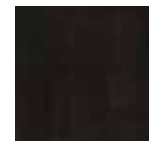
Mahogany
(MA)



Cherry
Blossom (CB)

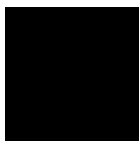


Grenada
(GR)

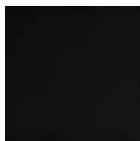


Chocolate
(CH)

Metal leg finish selections:



Smooth Black
(SB)



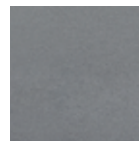
Textured Black
(TB)



Textured Nickel
(TN)



Smooth Silver
(SS)

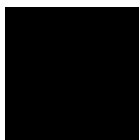


Gunmetal
(GM)



Metallic Beige
(MB)

Polyurethane arm cap finishes:



Black (PB)



Grey (PG)



Taupe (PT)

Rigid polyester arm cap finishes:



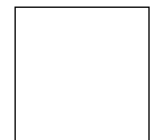
Black (EB)



Grey (EG)



Taupe (ET)



White (EW)



STANCE | HEALTHCARE

45 Goodrich Drive Kitchener, ON N2C 0B8 tel 1.877.395.2623 fax 1.877.395.6270 stancehealthcare.com

S01-19 © Stance Healthcare Inc. all rights reserved.

