

resilia

drum table for behavioral health



resilia

The Resilia Drum Table is perfect for behavioral health facilities. It features a Marmoleum™ surface which makes it extremely durable and easy-to-clean. Overall, the unique appearance of the Resilia Drum Table helps provide an environment that feels less institutional.

Features

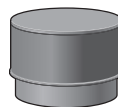
- Steel plinth base adds weight and protects table from damage
- Marmoleum™ surface material provides enhanced durability
- All fasteners are concealed
- Glides are tamper-resistant and non-removable
- Solid surface top available in a variety of colors

Options

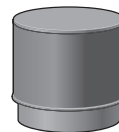
- Custom solid surface and powder coat finishes
- Other Marmoleum™ finishes also available
- Custom dimensions



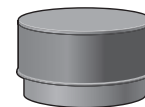
Statement of Line



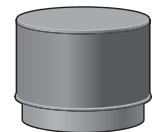
20 x 15



20 x 20



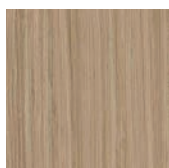
24 x 15



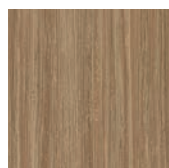
24 x 20



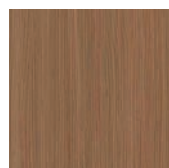
Marmoleum™ color selections:



North Sea Coast



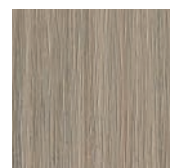
Withered Prairie



Fox Cub



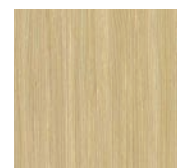
Cliffs of Moher



Trace of Nature



Rocky Ice



Pacific Beaches



STANCE | HEALTHCARE

45 Goodrich Drive Kitchener, ON N2C 0B8 tel 1.877.395.2623 fax 1.877.395.6270 stancehealthcare.com
S01-17 © Stance Healthcare Inc. all rights reserved.

